



Navigation Systems (plus Hawaii Navigation 401)

topic headings from Article at:

https://pacificcup.org/sites/default/files/kbfiles/Lew-Navigationsystems.FF_.pdf

Lew – Christopher Lewis

March 16, 2014



Low introduction:
Sailing in 2013



Pyewacket- Andrews 70



Whiplash- MC 38



Adela



Decision
Carkeek 40



Natalie J
TP52



Banana



Roshambo- C31R



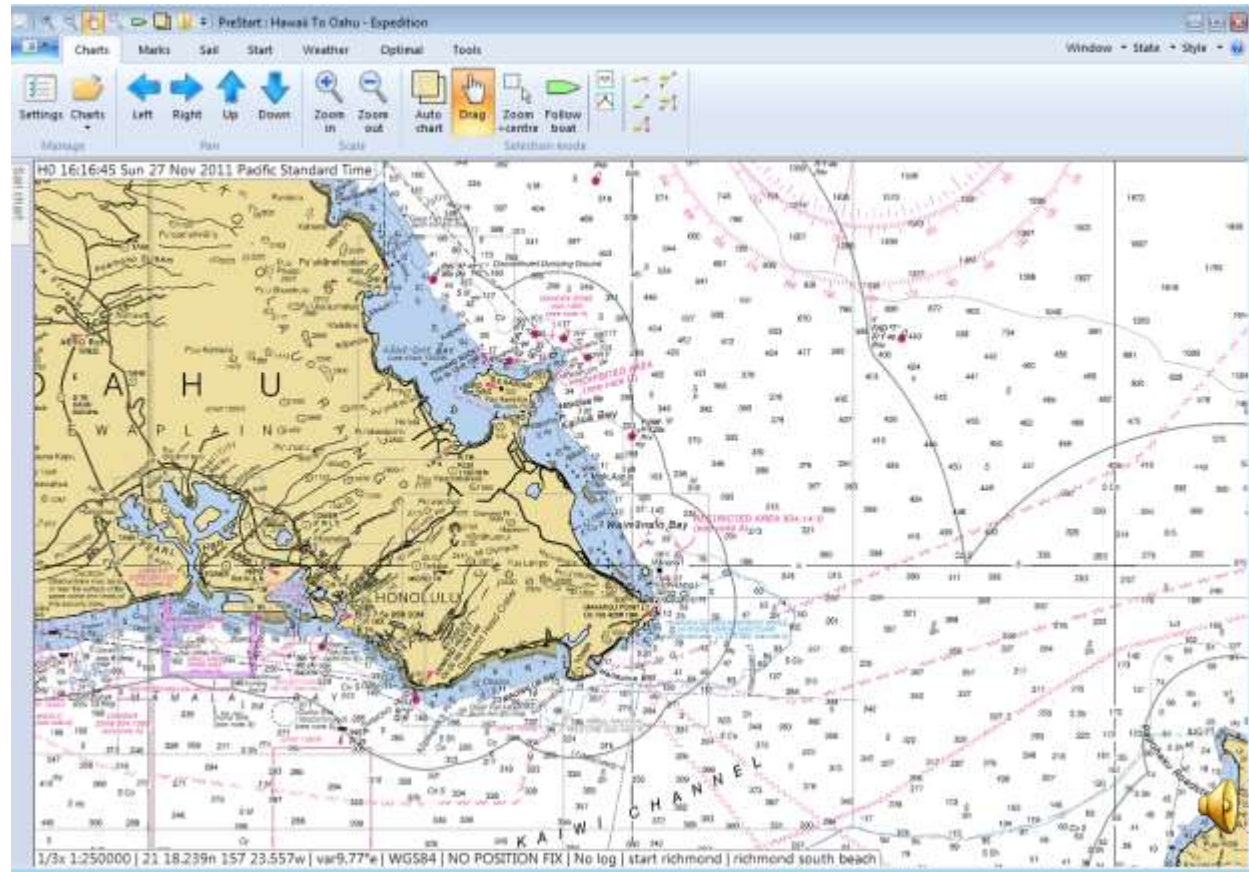
Where am I?

- GPS Sensors
- Handheld GPS
- Sextant



Charts

- Raster Charts
- Vector Charts
- Paper Charts
- GPS charts
- Pilot Books



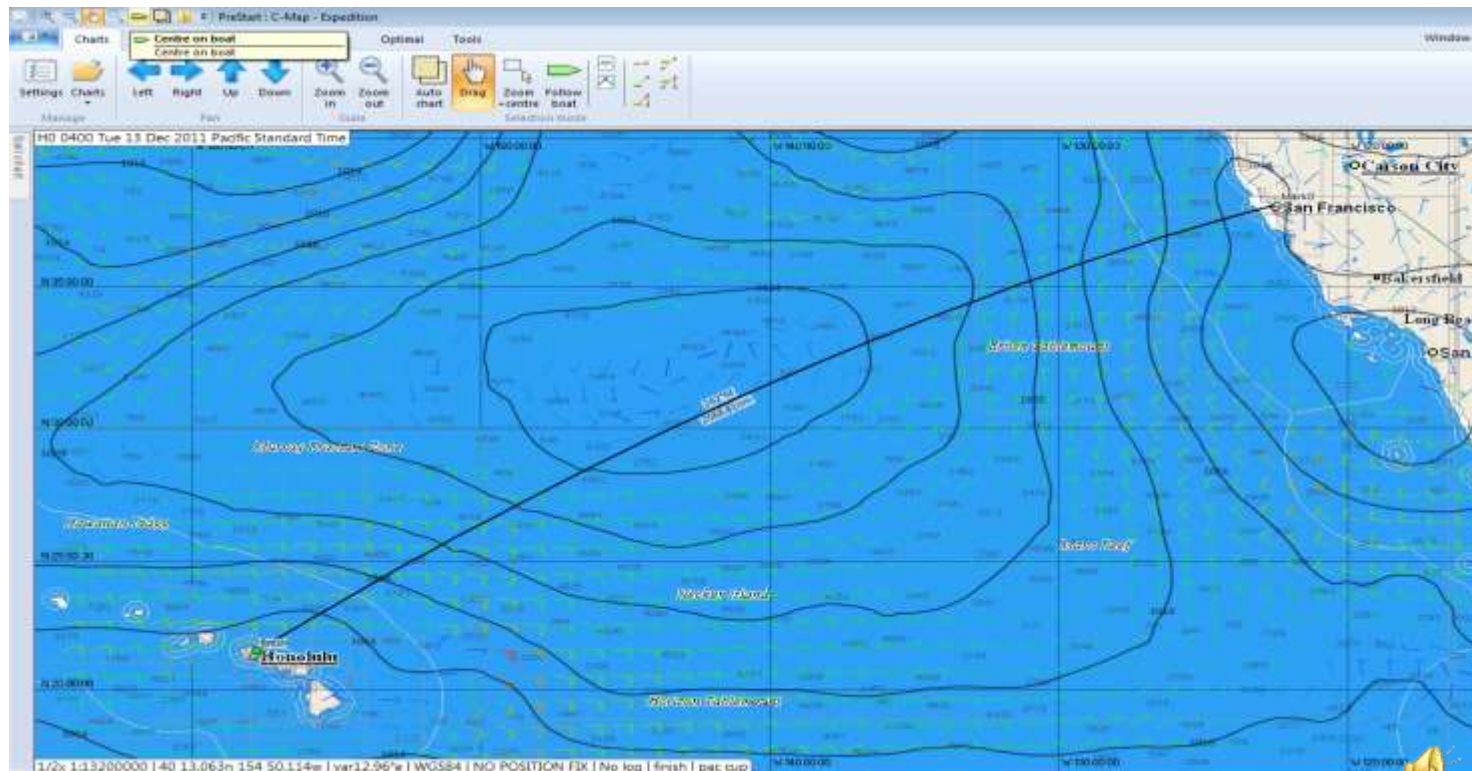
Comms

- Cellular
- Satellite
- SSB/HF



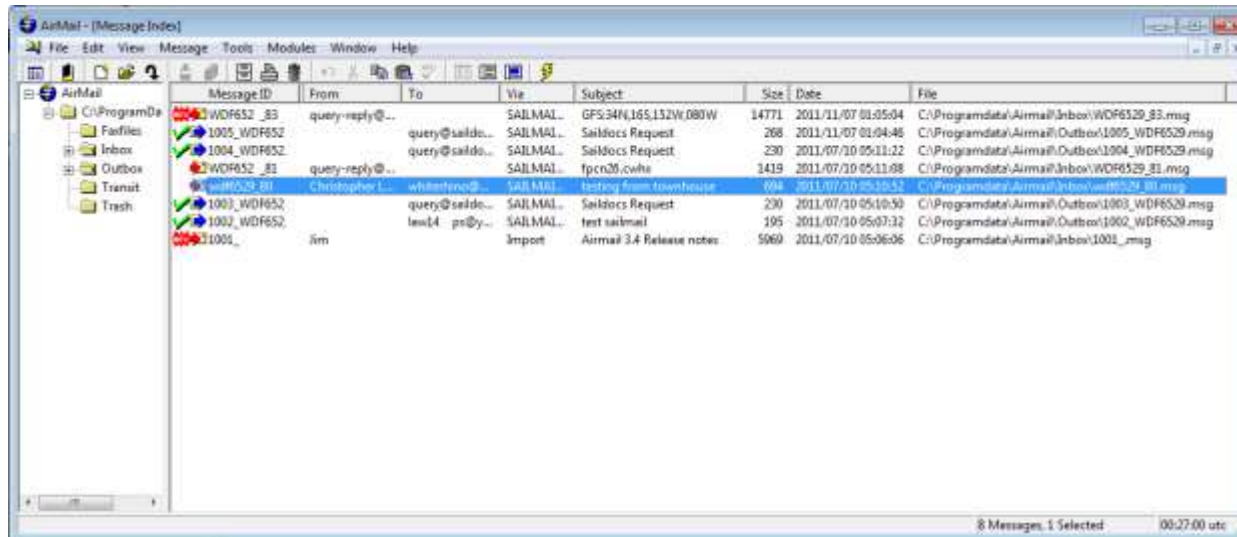
Download Grib files

- Airmail
- Expedition natively
- U-grib



Email

- Smailmail
- Outlook/thunderbird



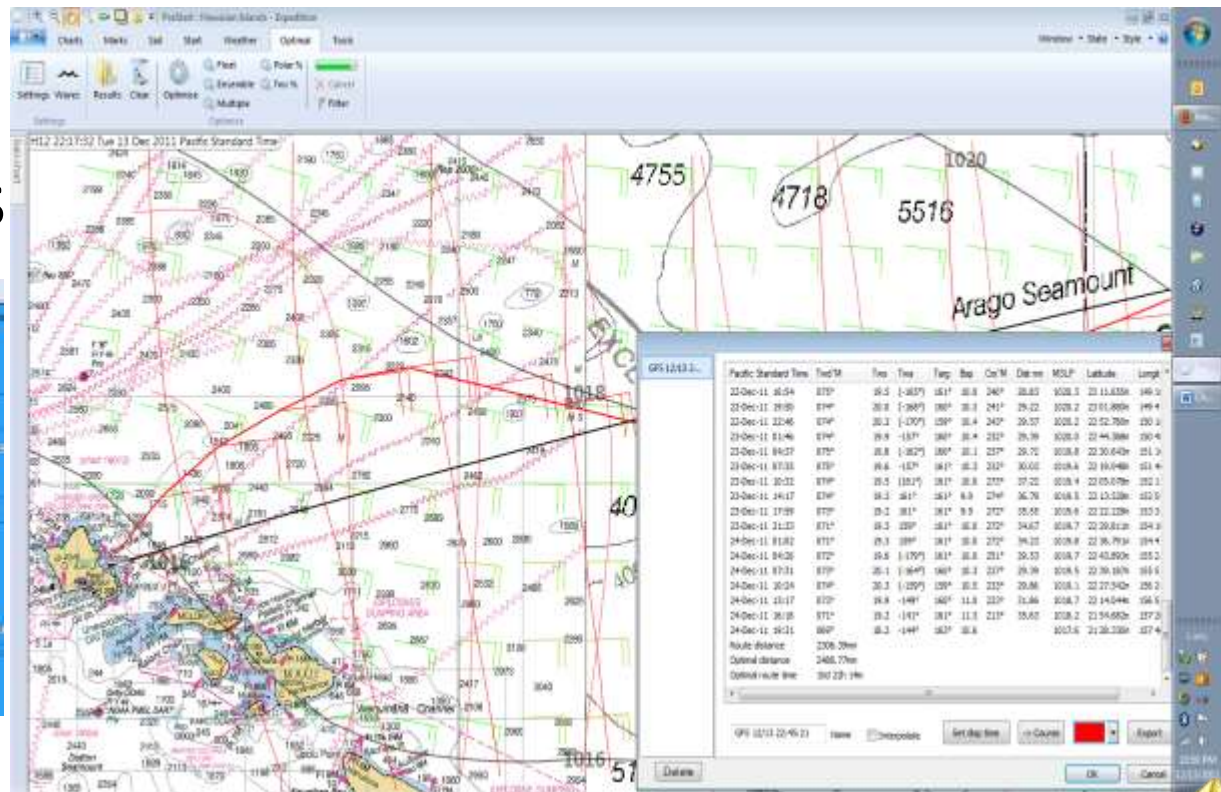
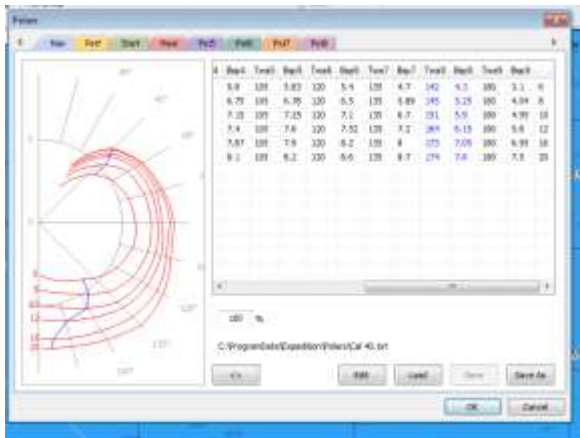
Sensors and Processors

- Types and kinds
 - Make
 - Model
 - Firmware
- Check installation
- Calibration
- Data into the computer/Comm ports



Route optimization

- Computer
- Routing Software
- Polars
- Weather files



Communication to Deck

- Exporting Data to Deck displays
- Briefings with Watch Captains/Skipper
- Tablets

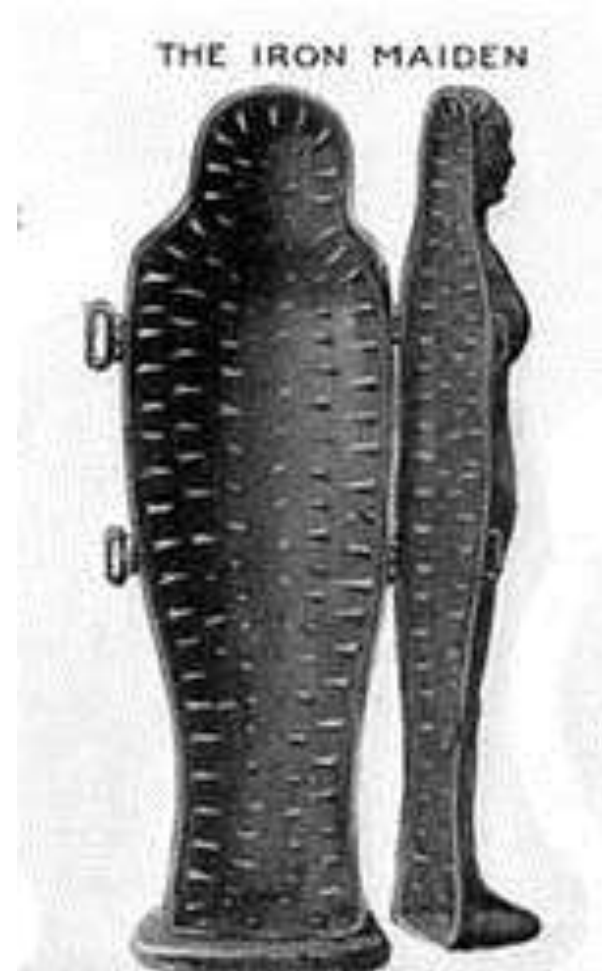


Physical items

- Handbearing Compass
- Watch
- Barometer



Part II- Hawaii Navigation 401



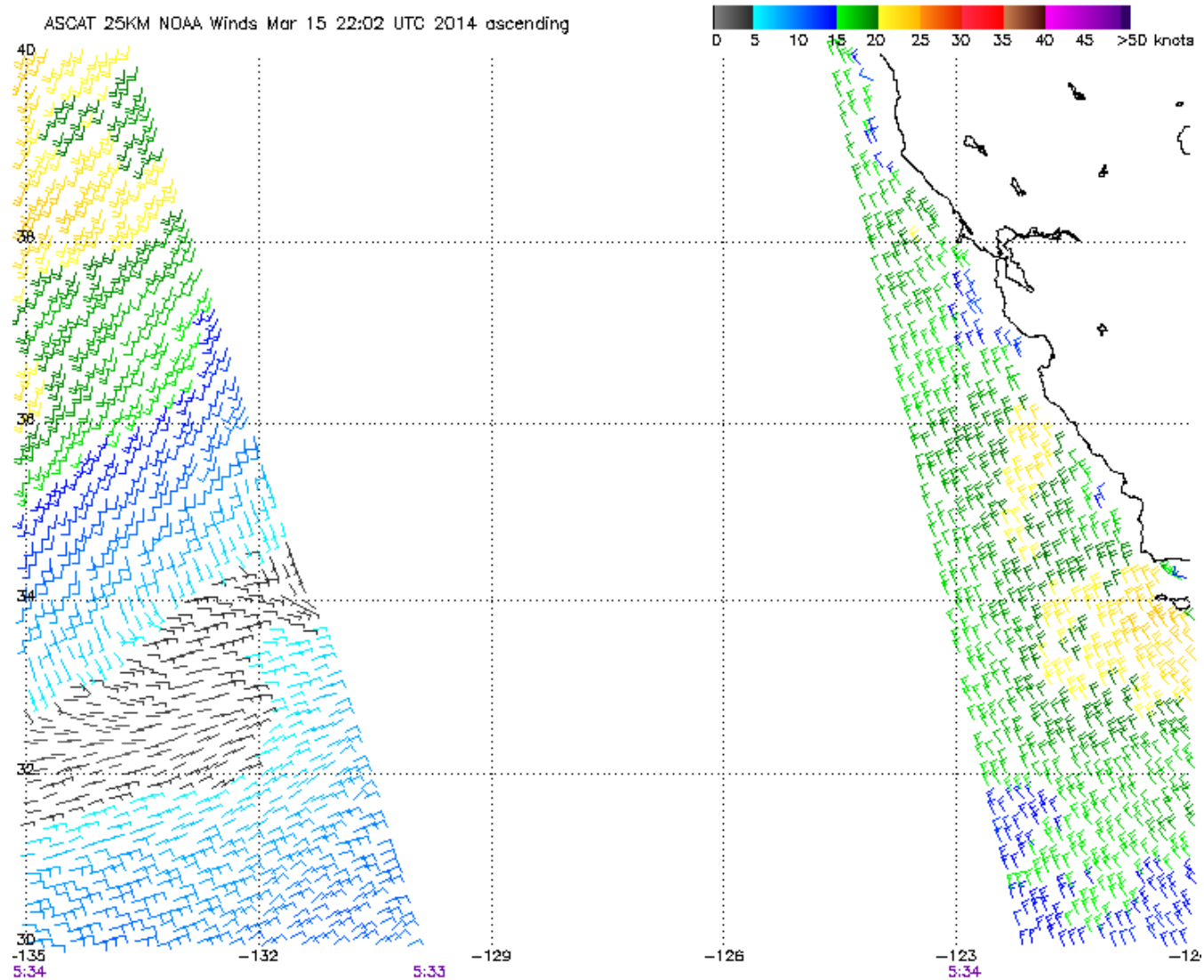
Weather Model Alphabet Soup



- WRAM Sailflow
- NAM
- Coamps
- Predict Wind
- GFS
- European- (ECMWF)
- Canadian (CMC)
- Nogaps
- WRF
- MM5



Scatterometer data?



Note: 1) Times are GMT 2) Times along bottom correspond to measurement at 35N
 3) Data buffer is 22 hrs from Mar 15 22:02 UTC 2014 4) Black circles indicate possible contamination
 NOAA/NESDIS/Office of Research and Applications



All squalls aren't created equal

